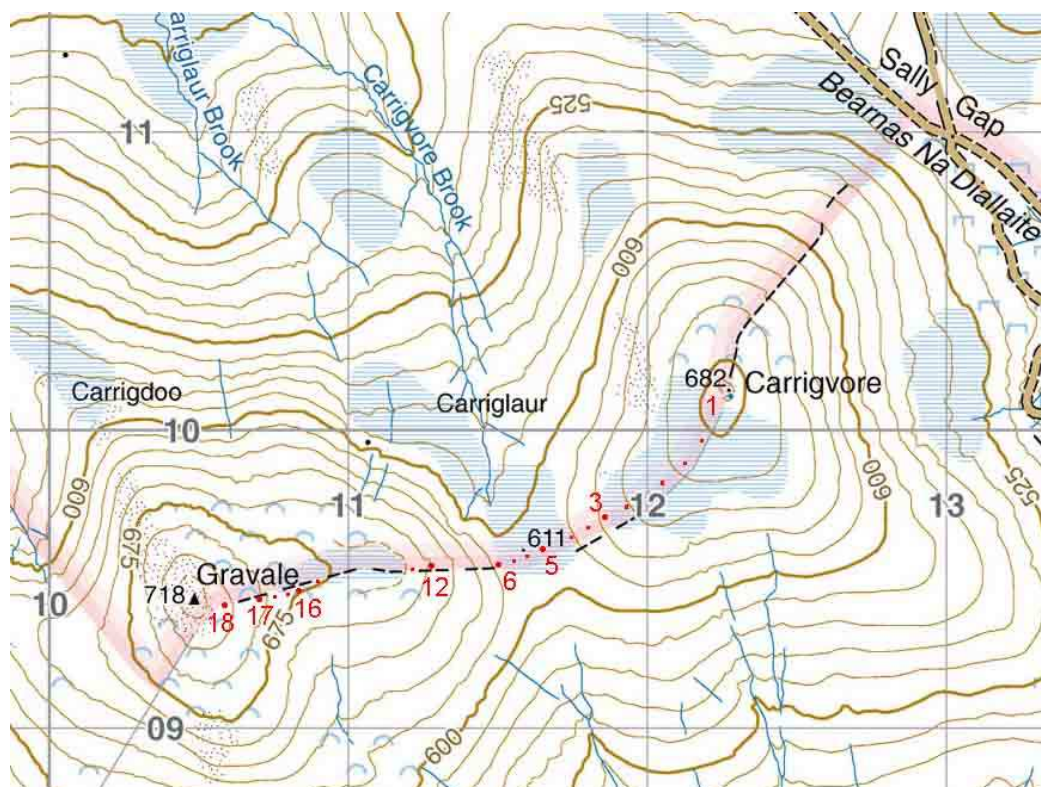


Wicklow Mountains Path Survey


Carrigvore - Gravale	
Start to Finish:	O 12280 10120 to O 10500 09440
Altitude (lowest – highest):	611m – 718m
Weather:	Rain, poor visibility
Access:	Sally Gap
Surveyed by:	John Monaghan 29 / 7 / 03




Reproduced from Harvey Wicklow Mountains Map, with permission.
© Harvey Maps 2002


Abbreviations used:

- pw = path width
- tape = measuring tape set to 0.5m or 1m in a photograph for scale
- NSEW = North, South, East, West
- pic = photograph
- avg = average

No	Pos Irish Grid O	Comments / Photographs
1	12280 10120	Start at Carrigvore summit
2		<p>The path from the summit is at first indistinct; the boundary / trench running between Carrigvore and Gravale is reached before an ill-defined path is found; it runs downslope along the right hand (NW) side of the trench;</p> <p>The path on soft peat is wet, broken, crossing minor transverse gullies and soaks in the peat; its condition, however, does not seem to be worsening over the years, maybe due to the relatively small numbers of walkers in this remote area (relative to the more heavily used eastern area of the Wicklow mountains)</p>
3	11873 09705	<p>pic13 looking back down shows the path braiding and waterlogged; tape 0.5m</p>  <p>note: the path as fixed by gps does not correspond to that marked on the Harvey map above; <u>if</u> there is a second path, it was not found due to bad weather on the day of the survey</p>
4	50m on	boundary / trench ends; the next section of path is very wet and broken as the slope eases off

5	11678 09624	the path runs out on the saddle between the two summits; the saddle itself is wet/ spongy with cross soaks and drains
6	11504 09566	at the bottom of the slope up to Gravale the path picks up again, then splits to go both sides of the trench; the trench going uphill is noticeable because of its surface of yellow / green grass contrasting with the darker heather on either side; I took the path on the left (S) of the trench
7	30m up	<p data-bbox="430 520 1328 659">pic14 looking up shows the path on the left of the trench, the trench itself (brighter green) going diagonally up through the photograph, and, barely visible, the other path on the far side of the trench; tape 0.5m</p> 

8	10m up	<p data-bbox="430 142 1279 212">pic16v shows a peat step; erosion here from water and walkers clambering up (and down); tape 0.5m</p>  <p data-bbox="430 1115 1170 1150">avg pw ahead, as seen in the photograph above = 0.5m</p>
9	120m on up	<p data-bbox="430 1220 967 1255">the trench ends, and the two paths meet</p>

10	30m on up	<p>pic17v closeup shows water running down the path; tape 0.5m; path braiding here also</p> 
11		on the next section of path avg pw = 0.5m – 1m wide
12	11294 09568	the trench appears again, the path running alongside the right-hand (N) side of it, single file in width through eroded peat

13

100m
on up

path runs between peat hags on a surface of peat / eroded
granite; pic19v shows this area with a lot of water on the surface



14


the path goes through low peat hagsgs / peat banks, across the east "shoulder" of Gravale; pic26v looking ahead shows the type of terrain






15

pic27 looking back along the path; the main watercourse in the photograph goes to the right; the path straight back...



16	10837 09471	<p>at the bottom of the final slope up to the summit, the path, single file on grass, becomes more defined again, running alongside a now narrow trench; there is a wider, more obvious trench over to the left;</p> <p>the two trenches converge 60m on, the path now running alongside the larger trench</p>
17	10708 09441	<p>pic20v shows the single file path as a watercourse; tape 0.5m</p> 

18	10600 09410	path braiding as it goes through peat hags; pic21 looking back shows one braid under water, the other, higher and drier; tape 0.5m 
19	same	pic22 shows the path ahead; tape 0.5m 

20	10500 09440	the last 60 metres to Gravale summit 
		END