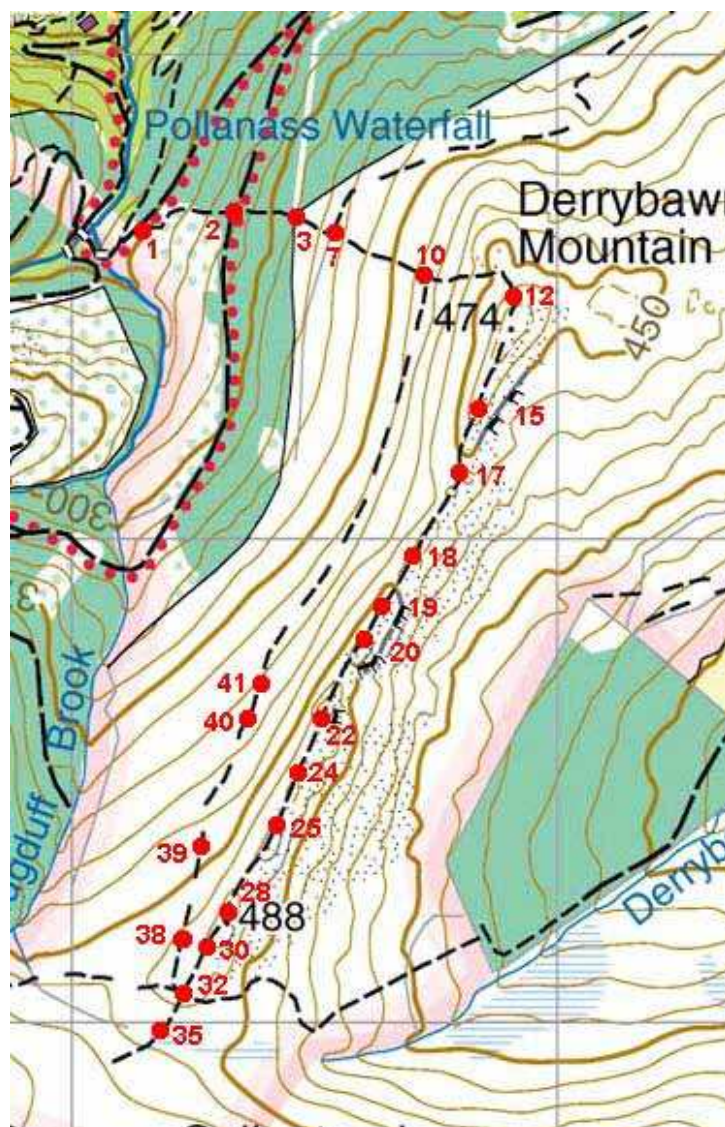



## Wicklow Mountains Path Survey

<b>Derrybawn</b>	
Start to Finish:	T 111 956 to T 11397 94702
Altitude (lowest – highest):	280m – 557m
Weather:	Showers
Access:	Glendalough Upper Lake car park
Surveyed by:	John Monaghan, 3 / 7 / 02



Reproduced from Harvey Wicklow Mountains Map, with permission.  
© Harvey Maps 2002

No	Pos Irish Grid T	Comments / Photographs
1	T 111 956	Start at forest track; path going steep uphill NE; grass surface, bracken at sides; some pigeonholing on the path
2	11314 95642	path crosses upper forest track; damage on the steep step-up at the upper side of the track; brushings available here
3	11470 95681	<p data-bbox="430 594 1325 695">At top of forest there is a wooden stile 10m to the left (N) of the exit point of this path; the path with the stile (marked on the Harvey Map) leads down through the forest roughly parallel with this one</p>  <p data-bbox="430 1587 1325 1688"><u>pic13a</u> shows beginning of path up to Derrybawn; the black step at bottom right is knee high; path is 2m wide, deeply gullied and pocked; lots of loose stones on it</p>
4	40m up	from the top of the forest, path braiding


5

11514  
95653

path widens out to 4m; mineral soil and stones; heather and bracken both sides



pic14 looking back down shows this; forest below

6	11538 95646	<p>slope eases off here; path is deeply eroded</p>  <p>pic15 shows a high step with pigeon holing; map and gps visible in the pic, Derrybawn ridge above</p>
7		<p>at the top of the step shown in pic15 there is more braiding; also a minor single file path branches off to the left into the heather</p>
8	50m on up	<p>at large 1m high boulder on the right-hand side; path braiding here; path width = 4m</p>
9		<p>path then narrows to <math>\leq 1\text{m}</math>; loose stones; very pitted; gully is 40cms deep in places</p>
10	11712 95567	<p>braiding here and further up; path on grass and mineral soil surface</p>

11

turned right (SSW) onto Derrybawn ridge at the top of the path;  
path width = 5m; peat and loose stone surface



pic16 looking down on this; the upper lake can be seen below


12

11919  
95498

flat wet area 8m wide; single path needed here



pic17 looking ahead to the stone cairn shows this area

13		 <p data-bbox="430 800 1268 863">pic18 at cairn (see bottom left) looking ahead; path width at the peaty patch in the middle of the pic is 8m wide</p>
14	30m on	path width $\geq$ 2m at its narrowest; peat depth = 20cms

15

11834  
95249



pic19 taken at the top of the first steep downslope after the cairn, shows the path ahead to the next summit



16



pic20 looking back up the same slope

17	11807 95137	<p>pic21 looking ahead (this section can also be seen in <a href="#">pic19</a>); wet area in foreground; walkers approaching</p> 
18	11708 94963	<p>path width = 6m where the walkers were located in pic21; peat depth = 10 to 20cms; path surface of grass, moss and peat - getting wider</p>  <p><a href="#">pic22</a> looking back shows walkers at the top of the slope where <a href="#">pic19</a> was taken</p>

19

11650  
94854

short distance further on; peat depth = 30cms



pic23 looking back N

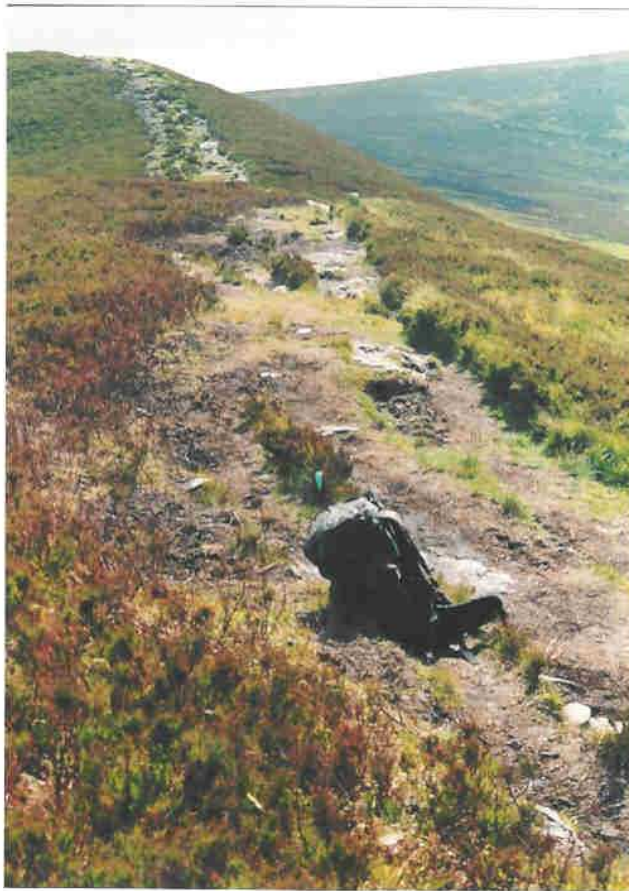
20

11606  
94795



pic24 looking back N from second summit; bag in pic for scale

21







pic25 looking ahead S from second summit; rucksack for scale; path width = 5m on the far slope at top of picture



22 11516  
94616



pic1 looking back N shows braiding on the slope; walkers going both left and right, widening the path



23	25m on	low wet peaty area
24	11475 94516	<p>path width = 4.7m here</p>  <p><u>pic2</u> shows path widening dramatically</p>
25	11427 94407	 <p><u>pic3</u> looking back (gps on the rock in the foreground); path width = 4m in the mid picture</p>
26	20m on	wet area

27	40m on	wet area on the "saddle"
28	11327 94230	<p>going up to the last summit on the Derrybawn ridge</p>  <p>pic4 looking ahead S shows eroded peat on the left, "new" path on the right; path width = 5.7m in the picture</p>
29		 <p>pic5 looking S from this summit to the path ahead up to the Cullentragh - Mullacor ridge</p>

30	11285 94157	<p data-bbox="430 142 1295 241">note: small "quarry" can be seen from here down to the right (W); this is the end of the wide stony track which comes up from the Derrybawn river to the E</p>  <p data-bbox="430 898 1263 961"><u>pic6</u> looking ahead downslope; path surface is peat on the left, stony on the right; total path width = 5m at the bag</p>
31	same	 <p data-bbox="430 1682 1295 1745"><u>pic7</u> looking back up towards the last summit; path width = 6m in the foreground, and 4m further up</p>


32	11232 94058	<p data-bbox="430 142 828 178">path crosses wide stony track</p>  <p data-bbox="430 840 1161 871"><u>pic8</u> looking back up the slope towards the last summit</p>
33	same	 <p data-bbox="430 1822 1323 1921"><u>pic9</u> looking south shows path going uphill (magnetic bearing 200°) towards Cullentragh; single file width; another path, going up to Mullacor branches off right in the foreground</p>

34

same

pic10 shows this wider path going uphill (magnetic bearing 230°) towards Mullacor; path width 1.5 to 2m and already braiding (ref: No. 8, Cullentragh - Mullacor survey)




35	30m on	along the path to Mullacor, looking back  <u>pic11</u> closeup (looking back towards the junction with the Cullentragh path, top of picture) shows this braiding; path width across the heather "island" in the middle of the pic = 1.7m
36		RETURN northwards

37

where the wide stony track ends in a small "quarry" (No. 30 above)



pic12 looking ahead and down (NNW) a single file path going back towards the start of the route; Derrybawn ridge out of sight above and to the right; Scarr in mid horizon

38	100m on down	 <p data-bbox="435 1037 1325 1104"><u>pic13b</u> path already gullied and widening; note "new" paths on both sides</p>
39	11278 94367	wet area; the path is a watercourse after today's rain
40	11364 94627	shortly after the path enters high heather and becomes indistinct
41	11397 94702	indistinct... path runs out
		END