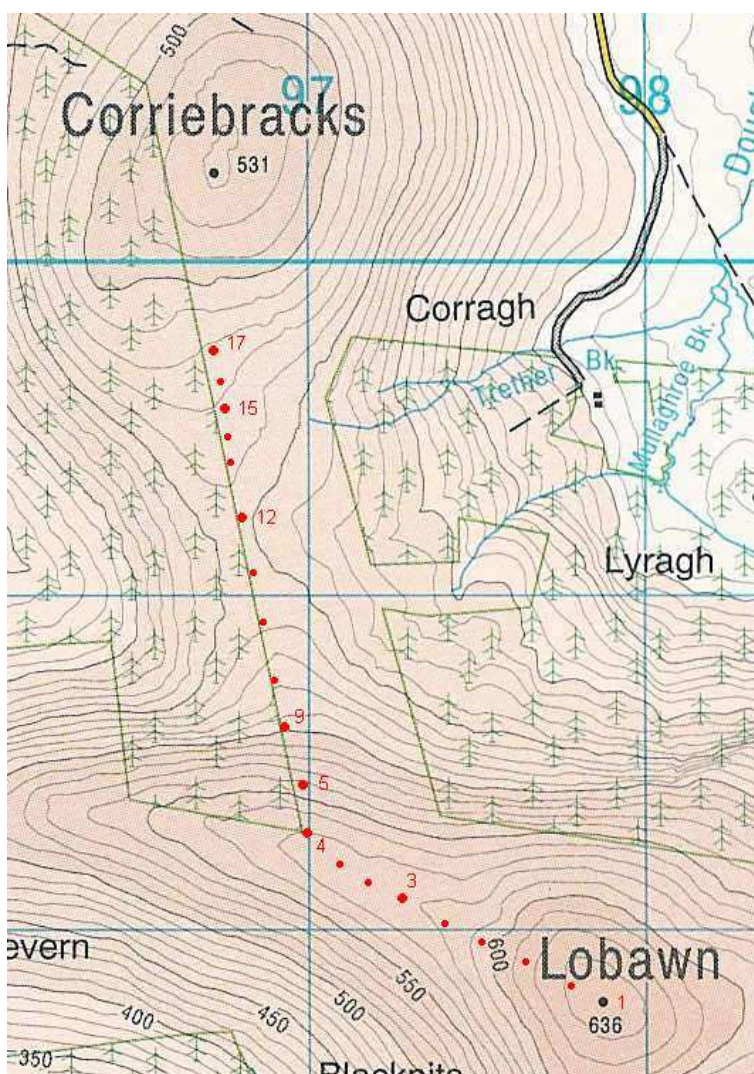


Wicklow Mountains Path Survey


Lobawn - Corriebracks	
Start to Finish:	S 9789 9779 to S 96709 99743
Altitude (lowest – highest):	455m – 636m
Weather:	Sunny, dry, strong wind
Access:	Snugborough Bridge, Donard
Surveyed by:	John Monaghan 19 / 6 / 03



Reproduced from Ordnance Survey Ireland
Copyright Permit No. MP 006403

Abbreviations used:

- pw = path width
- tape = measuring tape set to 0.5m or 1m in a photograph for scale
- NSEW = North, South, East, West
- pic = photograph
- avg = average

No	Pos Irish Grid S	Comments / Photographs
1	9789 9779	Start at Lobawn summit; summit area soft but not eroded
2		<p>the path leaving the summit and going WNW along by the trench is at first indistinct; the going is on grasses and low heather, soft and spongy in summer, wet and slushy in winter;</p> <p>further down the path on the left (S) of the trench gets more pronounced; the path on the other (N) side is still vague</p>
3	973 981	<p>pic14 looking ahead shows the path meandering along by the trench; tape = 1m; no visible path on the other side; barely seen are the tracks to the right of the trench in the distance</p> 
4	970 983	the route now turns right (NNW) to follow a wide path on deep peat down the slope by the forest edge

5

96974
98434

pic17v shows this path on the steep slope; water channel on the left; tape = 1m; path width = 3-4m; Corriebracks summit in the background




there is a very wet area just behind where the photo was taken



6

same



10m to the right of this path another narrower path runs parallel;
pic16v looking back up, shows a high step on this; tape = 1m



7	same	<p>pic15v from the same location shows a third path wider than the second one; tape = 1m; note the 20 cm. deep tyre track</p> 
8		<p>further down the steep slope the path width has gone out to 7m; very soft going on deep peat</p>

9	96917 98680	<p>pic18 looking back up shows the path; tape = 1m; there is potential for unlimited widening here; in wet weather nobody will walk on the main path; on the left of the photo there are more narrow paths forming on the soft ground; trampling and water runoff will quickly erode them</p> 
10	same	<p>pic19 looking ahead; tape in the same position</p> 
11		<p>deep drainage ditches meandering to the right of the main path (as seen in photos 15v and 17v) also have single file paths beside them</p>

12	96817 99231	<p>where the peat surface ends and stony / granite surface begins pic20 looking back shows a wet area of peat, sphagnum moss and water in the foreground; the beginning of the stony section can be seen at the bottom of the photograph; Lobawn top left</p> 
13	same	<p>pic21 looking ahead from the same position; tape = 1m; path width = 5m</p> 

14	100m on	pic22 looking back; tape = 1m 
15	96753 99551	stony section ends; path now back on soft peat; path width = 5m; more paths running parallel on the heather to the right making for a total width of 10m
16	50m on	pic23 looking ahead shows deep tyre tracks in the peat; tape = 1m 

17	96709 99743	<p>the path to Church Mountain turns left here along by the fence at the NE corner of the forest; Note: the forest boundary here, as shown on the OS Sheet 56 map, seems to be incorrect</p> <p>two or more indistinct single file paths on broken peat / heather continue straight on towards the indistinct top of Corriebracks...</p>
		END