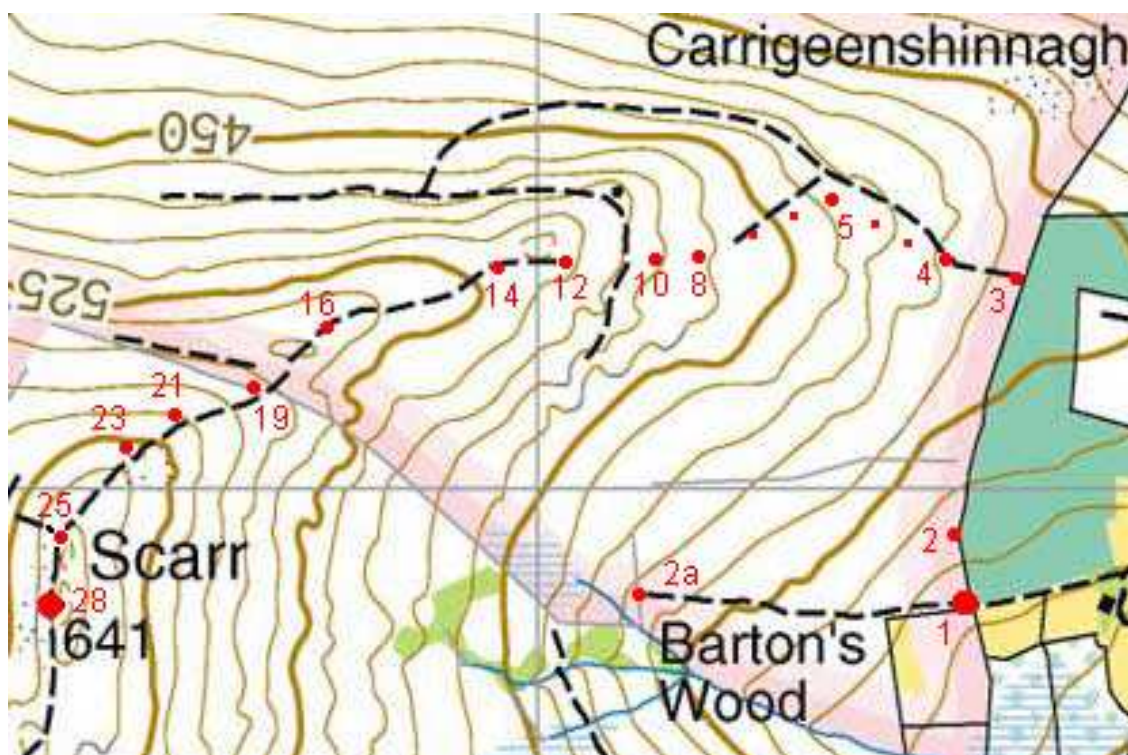



Wicklow Mountains Path Survey

Oldbridge - Scarr	
Start to Finish:	O 14650 01830 to O 13265 01836
Altitude (lowest – highest):	340m – 641m
Weather:	Hot, rain in the afternoon
Access:	Oldbridge track at O 1580 0195
Surveyed by:	John Monaghan, 6 / 8 / 02




Reproduced from Harvey Wicklow Mountains Map, with permission.
© Harvey Maps 2002


No	Pos Irish Grid O	Comments / Photographs
1	14650 01830	Start at SW corner of forest
2a	14150 01860	grassy path runs W from corner of forest up to the first trees of Barton's Wood (marked on Harvey Map); grass and bracken surface; peat / mineral soil; 2-3m wide; thick bracken both sides



1	14650 01830	Back to Start ; path running N along the edge of the forest
2	1463 0193	<p>100m from start; path width = 4m to 6m</p>  <p><u>pic1</u> looking N, shows path along by the side of the forest; grass / stony surface; tape = 0.5m</p>
3	14716 02313	the path W up to Scarr summit begins; surface of grass and some stone
4	120m on up	minor path branches off to the left; the main path going straight on
5	14460 02416	the path up to here generally has been narrow; it now becomes indistinct and hard to find at a wet area; motorbike tracks visible here
6		wet and mushy going up the slope (sphagnum moss underfoot)
7	60m on up	find path again on wet peat

8	14262 02347	<p><u>pic2</u> looking back down shows indistinct path on soft peat; note: the start of this path is at the left end of the wide "gap" in the forest below</p> 
9		<p><u>pic3</u> looking up shows a more distinct path; tape = 0.5m</p> 
10	14180 02359	<p>wet area on the slope; steps up on wet peat</p>



11	40m on up	first signs of braiding; heather / grass island in the middle; path width = 1m
12	14050 02354	<p>path width about 1.5m here</p>  <p><u>pic4</u> looking up shows path; tape = 0.5m; predominantly heather on either side</p>
13	50m on up	<p>at the top of the first rise; Scarr summit now in sight</p>  <p><u>pic5</u> shows the path ahead, still indistinct and not yet badly eroded (but widening); Scarr summit at top left</p>



14	13952 02335	wet area at the lowest part of the "hollow" (which can be seen in pic5); a cross drain here which needs to be bridged
15		the path from the wet "hollow" (No. 14) to the post and wire fence (No. 19) is generally wide and indistinct; it goes out to circa 4m with no <u>definite</u> path in places
16	13706 02247	<p>pic6 looking up shows the path ahead up the next slope; tape = 0.5m</p> 

17	same	<p>pic7 looking back down shows the path; tape = 0.5m; Roundwood Reservoir top right</p> 
18	50m on	flat wide wet area
19	13597 02158	post and wire fence crossing the path in a N-S direction; a low wet area just before you get to it; beyond it the path goes steeply up the slope

20	40m on up	<p data-bbox="430 142 1255 212">note: generally the path suffers greater erosion on the steeper sloped sections from here on up to the summit</p>  <p data-bbox="430 884 1247 953"><u>pic8</u> looking back down towards the fence shows the broken nature of the path as it ascends the slope; tape = 0.5m</p>
21	13454 02106	<p data-bbox="430 1020 1300 1089"><u>pic9</u> looking ahead shows a closeup of the path eroded down to stone on a steep step; tape = 0.5m</p> 

22	50m on up	<p>pic10 at the next "rocky step", looking back down shows the path; tape = 0.5m</p> 
23	13381 02051	<p>pic11 looking up shows pigeon holing on the path on a steep section; tape = 0.5m; path = 3m wide where the tape is</p> 
24	50m on up	<p>where gradient eases off, path width > 4m; very distinct; peat and stone surface</p>

25	13286 01947	<p>at junction or turn off for Kanturk; path width = 8m here</p>  <p>pic12 shows path straight ahead along the summit ridge; path to Kanturk on the right; tape = 0.5m</p>
26	same	<p>pic13 looking back down, shows path; tape = 0.5m</p> 

27	50m on up	<p>pic14 shows path to the summit in various stages of erosion and widening; walking group at the summit</p> 
28	13265 01836	<p>Scarr summit; path width = 5m</p>  <p>pic16 looking back N along the summit ridge; tape = 0.5m</p>
		END